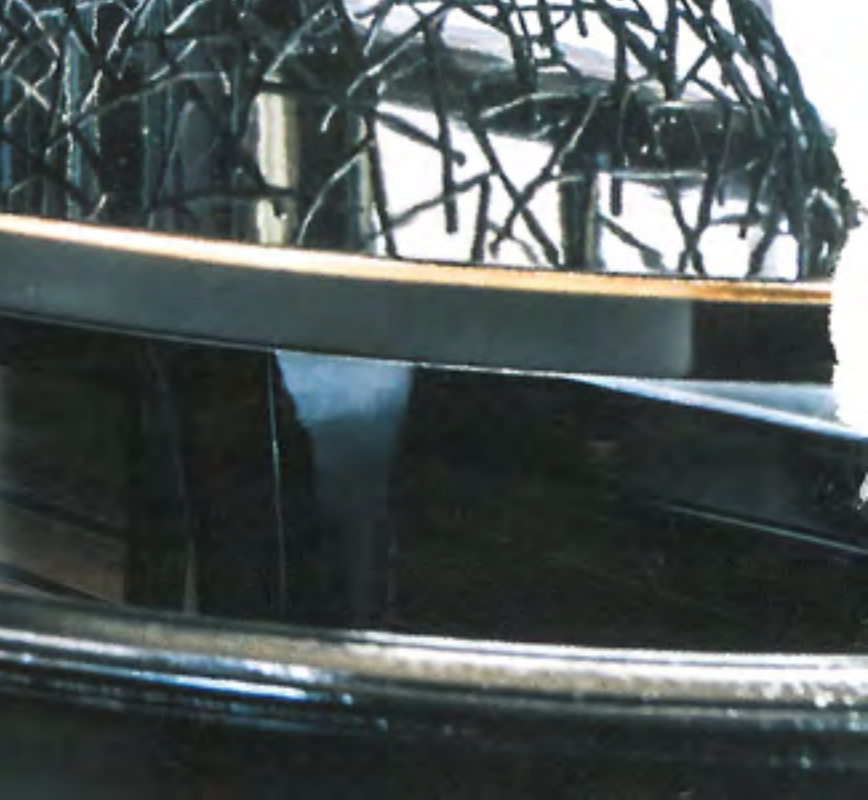
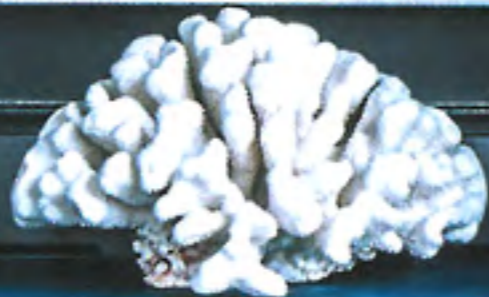


Make It Pop

(THIS PAGE) A blue Ambience console table from Edward Ferrell + Lewis Mittman punctuates the glossy gray study. The black and white chairs are Billy Haines from High Style Deco. Roman shade is Travers by Zimmer + Rohde. **Glamour Shot** (OPPOSITE PAGE) Urban Electric pendants provide lighting above the kitchen island. Custom stools made by Ironware International add a touch of glam. Backsplash marble mosaic is through Studium. See *Resources*.





True to Character

KNOWN FOR MOVIE-SET DESIGN, MARKS & FRANTZ MIXES
HIGH-VOLTAGE GLAMOUR WITH FUNCTIONALITY IN THIS GREENWICH HOME

BY ALEXA STEVENSON | PHOTOGRAPHY BY MARCO RICCA



Funky But Chic (ABOVE) Yellow drapes in a Fabricut fabric enliven the dining room's more traditional pieces, such as the Keith Fritz dining table from Wood & Hogan and Artistic Frames' Connecticut chairs. An ikat JD Staron rug through Brunschwig & Fils echoes the flame-stitch of the Holland & Sherry wall covering. **Complementary Colors** (OPPOSITE PAGE) A painting by Shawn Delaney for Sears-Peyton Gallery from the clients' collection creates a colorful backdrop for a floral arrangement by Tess Casey for Aisling Flowers atop a console from Niermann Weeks. Antique candlesticks are from John Rosselli. See Resources.

THE SHOES WERE FABULOUS, NATURALLY, but after five years, it's still the sets of the *Sex and the City* movie and its sequel—especially that envy-inducing closet Carrie shares with Big in *Sex and the City 2*—that design lovers covet. The vision behind the set that launched a thousand swoons belongs to Lydia Marks and Lisa Frantz of Marks & Frantz, a New York City-based design firm whose movie sets have residential clients knocking down their door. A Greenwich homeowner approached the pair not just for the closet but also for the designers' signature high-voltage glamour coupled with functionality. For the designers' second collaboration with the client, they were charged with updating the interior of a classic Colonial into something a little more bold and unpredictable. "We wanted to do Greenwich, but in a funky way. We carried over a lot of what we had [from the previous house] and tried to be resourceful," says Frantz. "We pulled together classic looks and shapes because the house called for it, then we put it together in a more contemporary fashion."

The designers opened up the flow of the downstairs by raising the sunken family room to hearth level—a change that improved flow without radically







reconfiguring the layout. Marks and Frantz saved the big oomph for the decorating: employing unusual color combinations and an interesting mix of materials with modern and vintage furnishings to complement the house's more traditional bones. One of the more classic rooms, the kitchen, gets gussied up with brass and silk velvet stools—pieces that would look right at home in a dressing room—surrounding a 10-foot-long island. A Sputnik chandelier hangs over a more serious kitchen table. “We like to push the envelope a bit by mixing vintage with modern,” says Marks.

In the living room, show-stopping deep pink curtains with double-tassel fringe pop against black silk walls. “We had the white sofas from the previous house and they were the perfect size. We knew we weren’t going to do a white room, so we picked a color and went with it. We wanted to do pink without being girly,” says Frantz. “If you are going to use a brave and bold color,” adds Marks, “you have to carry it through.” The dining room, too, screams of the designer’s go big or go home attitude with deep yellow polished cotton curtains with a soft ruffle detail (inspired by a dress). “We wanted to mix it up in this traditional space, and the windows were a great opportunity to make it fun and

Pattern Play (TOP) Phillip Jeffries’ Stardust Silk covers the living room walls. Chairs found on 1stDibs flank a vintage table from Harbor View Center for Antiques. Lampshades are covered in a Hermès toile. **Small Wonder** (LEFT) An antique mirror from Area I.D. is flanked by Visual Comfort sconces in the powder room, where Kallista fixtures complement a sink console from Urban Archaeology. **Out Of This World** (OPPOSITE PAGE) A Supernova chandelier in white with bronze accents by Lou Blass illuminates a Bausman & Company dining table through Zoffany. Chairs are from Donghia. The Roman shade fabric is by Lee Jofa. See *Resources*.





Marks and Frantz saved the big oomph for the decorating: employing unusual color combinations and an interesting mix of materials with modern and vintage furnishings





young and not so stuffy,” says Frantz. A black Art Deco hutch and flame-stitch rug offset the heavy mahogany table and chairs. “The furniture is more predictable, but what we surrounded it with brings it to a different place,” says Marks. “We are both open to trying unexpected things and moving things around—a lot of that comes from our background,” says Frantz. “A thing you don’t expect can become a special thing.”

It’s those special moments and clever mixing of styles that strikes a perfect balance between effortless and chic in Marks & Frantz’ interiors. “Because of our work with character development and brand development both in print and television,” says Marks, “we’ve gotten adept to taking words people use to describe what they want to express in their homes and bringing those ideas into reality. We often use combinations people don’t necessarily think would work together—that’s where beauty comes in and personality starts.”

Yellow Shots (TOP) In the master bedroom, Paul Smith’s Pale Swirl rug for the Rug Company ties together the various pops like the yellow and gray floral from Lee Jofa on a pair of chairs and Feathers wallpaper by Catherine Martin for Mokum. Duvet is from Anichini. **Glam Squad** (RIGHT) An antique chandelier from Carlos de la Puente Antiques hangs in the master bedroom wardrobe; custom silk runners from JD Staron are underfoot. Window fabrics are Osborne & Little. See Resources.

Playful Pop (OPPOSITE PAGE, TOP LEFT) A Roman shade in a blue and white Duralee print hangs in the playroom. **Monkey Business** (OPPOSITE PAGE, TOP RIGHT) Monkey Puzzle by Bennison covers the walls and is repeated in the canopy in the boy’s room. Rug is from the Oscar de la Renta Dhurrie Collection for Elson & Company. **Suite Dreams** (OPPOSITE PAGE, BOTTOM RIGHT) Custom wood paneling and statuary polished marble from Studium create a soothing master bathroom retreat. **Pretty In Pink** (OPPOSITE PAGE, BOTTOM LEFT) A lantern from Coleen & Company hangs in the nursery. The smocked window treatments were created by Marks & Tavano Workroom. See Resources.

